



Highclere

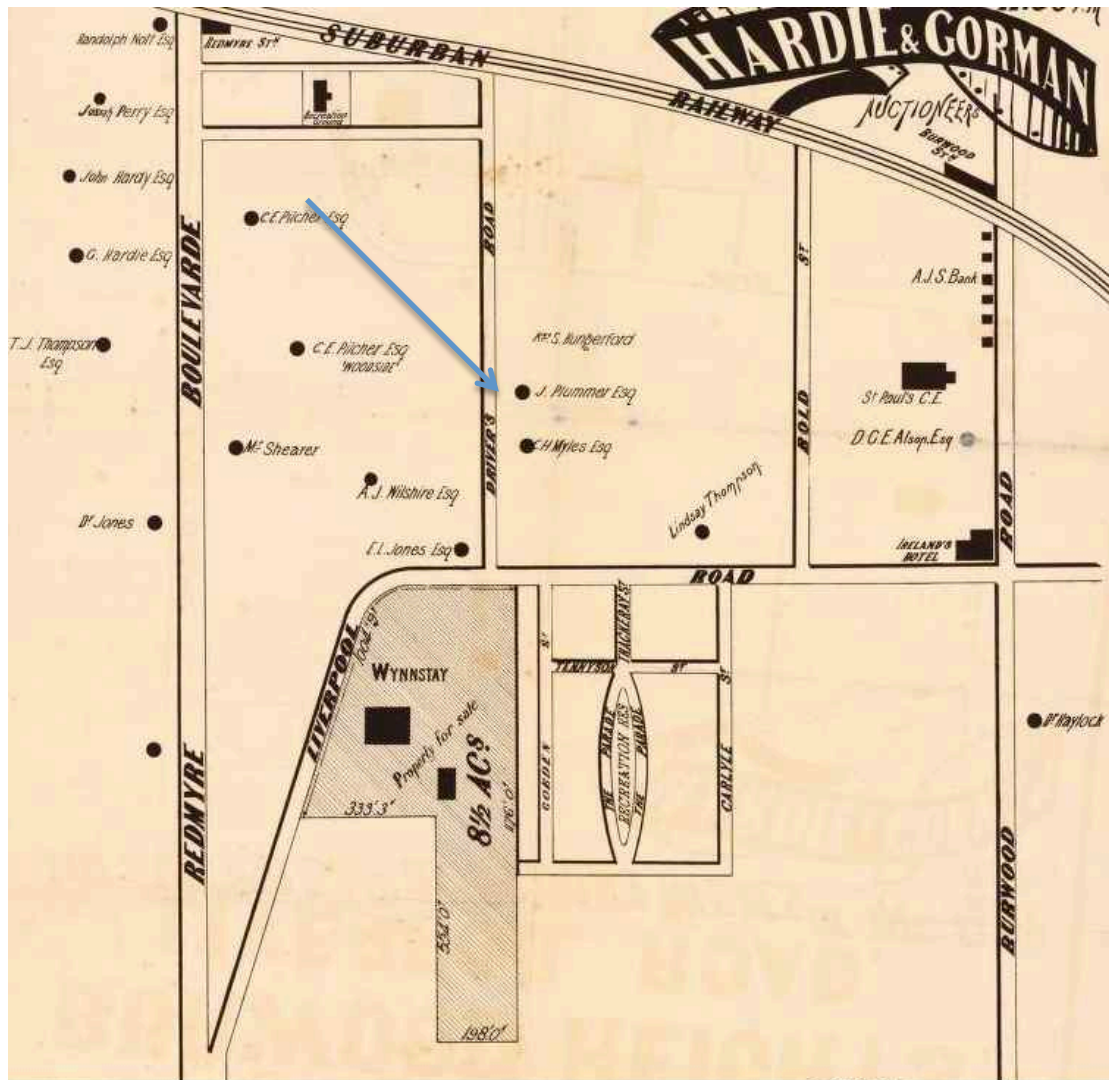


James Plummer erected his villa 'Highclere' in 1876 and it stood on a large block of land fronting both Minna Street and Wentworth Road. The photograph above dates from 1909.

Some ten years later tragedy struck the family when the Plummer's son, Richard, died on 11 February 1887.

On a happier note, their daughter, Alice, married Dr W B Studdy on 16 December 1897 at St Anne's church, Strathfield. *The Sydney Morning Herald* reported, "She wore a handsome white brocade dress, the bodice being prettily designed and trimmed with chiffon and orange blossoms, with a plain skirt relieved on the right side by a loop of white satin ribbon, orange blossoms, and accordion-pleated chiffon." The reception was held at 'Highclere'.

James Plummer died in 1905. By 1909 the family of Hepburn McKenzie, timber merchant, were living at 'Highclere'. McKenzie later lived at 'Bramhall' Jersey Road, Strathfield where he died in 1925.



This 1883 subdivision plan for the Wynnstay Estate, located nearby, shows the location of Plummer's residence [see blue arrow]. Wentworth Road was then Driver's Road.

In 1915 the 'Highclere Estate', encompassed by Wentworth Road, Munna, Bold and Lindsay Streets, comprised 19 good level building sites which were put up for auction.

Acknowledgement: Mark Babij <www.knowthatproperty.com>